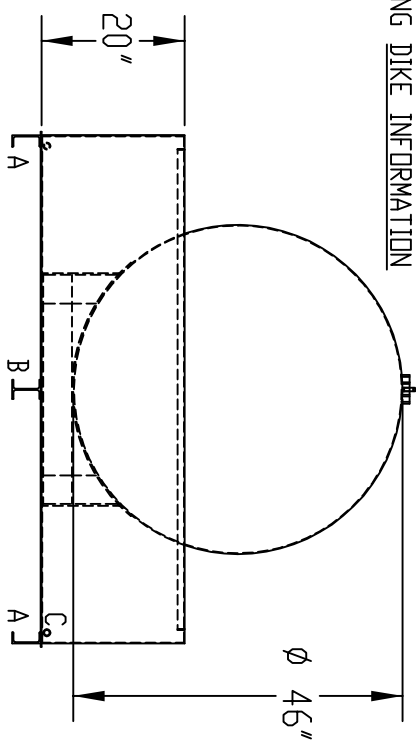
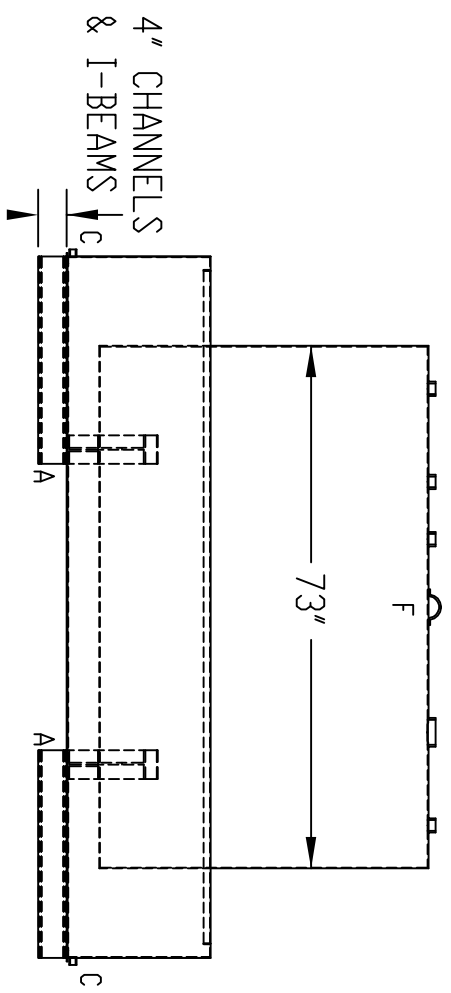
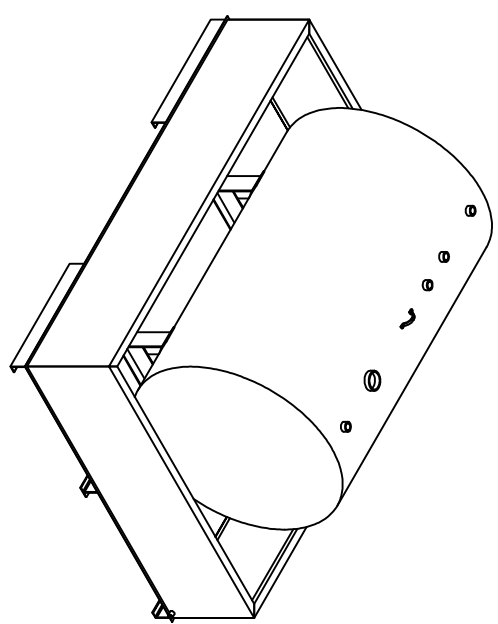


71" (DIKE)
72" (BASE)

- BRIEF LEGEND:**
- A-(4) 4" CHANNEL
 - B-(2) 4" I-BEAM
 - C-(2) 3/4" FNPT FLANGE
 - D-(4) 2" FNPT FLANGE
 - E-(1) 3" EVENT FLANGE
 - F-(1) LIFTING LUG

FOR FULL CONSTRUCTION DETAILS AND SPACING OF 'A' & 'B', REF. DRAWING DIKE INFORMATION



REF. TO: STANDARD DIKES
DATE: 06/23/08
DWG BY: AH

TITLE: **SC-525-12P WO RS**
SCALE: 1/16



TURNER TANKS
1500 HWY 117 S.
GOLDSBORO, NC 27530
P: (919) 734 - 8328
F: (919) 736 - 4550

DESCRIPTION: SINGLE WALL, STEEL ABOVEGROUND TANK SECURED WITH ANTI-FLOTATION STRAPS IN A STEEL DIKE. A REMOVABLE RAINSHIELD IS OPTIONAL.

CONSTRUCTION: TANK AND DIKE ARE OF WELDED CONSTRUCTION. OPTIONAL RAINSHIELD IS MECHANICALLY ATTACHED TO THE DIKE.

FINISH: SURFACE PREP IS SSPC-3. UNDERCOAT IS AN INDUSTRIAL PRIMER AND FINISH COAT IS AN INDUSTRIAL ENAMEL.

CAPACITY: 584 GALLONS

APPROX. WEIGHT: 1,040 lbs ± 5%