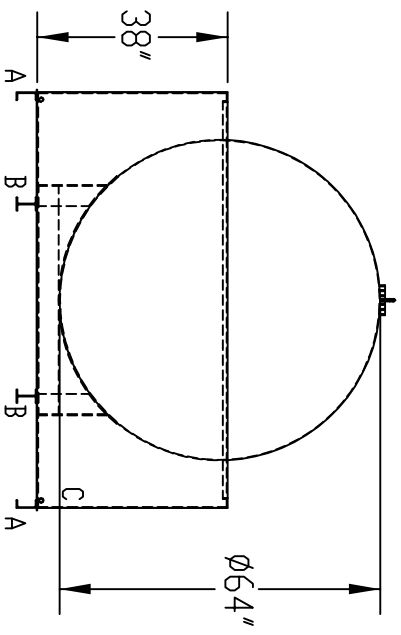
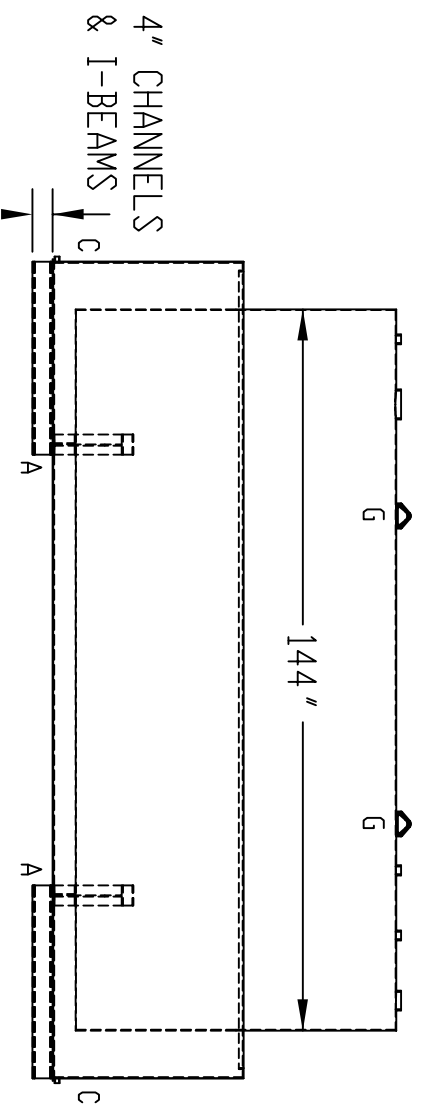


- BRIEF LEGEND:**
- A-(4) 4" CHANNEL
  - B-(2) 4" I-BEAM
  - C-(2) 3/4" FNPT FLANGE
  - D-(3) 2" FNPT FLANGE
  - E-(1) 4" FNPT FLANGE
  - F-(1) 6" EVENT FLANGE
  - G-(2) LIFTING LUG
- FOR FULL CONSTRUCTION DETAILS AND SPACING OF "A" & "B", REF. DRAWING DIKE INFORMATION



REF. TO: STANDARD DIKES  
 DATE: 06/23/08  
 DWG BY: AH

TITLE: **SC-2000-7P WORS**  
 SCALE: 1:48

DESCRIPTION: SINGLE WALL, STEEL ABOVEGROUND TANK SECURED WITH ANTI-FLOTATION STRAPS IN A STEEL DIKE. A REMOVABLE RAINSHIELD IS OPTIONAL.

CONSTRUCTION: TANK AND DIKE ARE OF WELDED CONSTRUCTION. OPTIONAL RAINSHIELD IS MECHANICALLY ATTACHED TO THE DIKE.

FINISH: SURFACE PREP IS SSPC-3. UNDERCOAT IS AN INDUSTRIAL PRIMER AND FINISH COAT IS AN INDUSTRIAL ENAMEL.

CAPACITY: 2,226 GALLONS  
 APPROX. WEIGHT: 4,070 lbs ± 5%



**TURNER TANKS**  
 1500 HWY 117 S.  
 GOLDSBORO, NC 27530  
 P: (919) 734-8328  
 F: (919) 736-4550