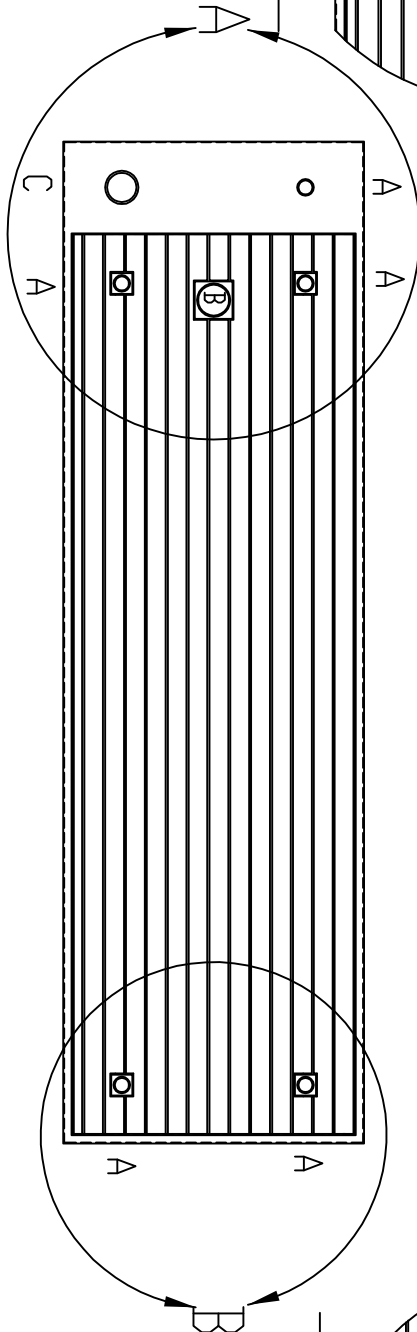
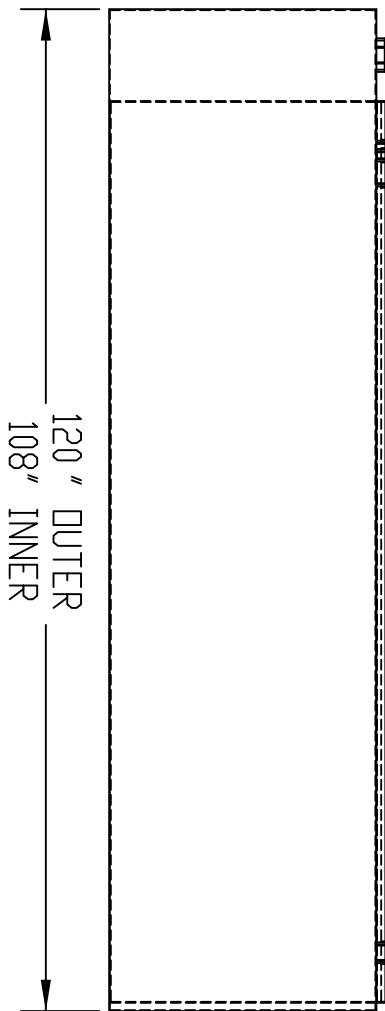


DETAIL A



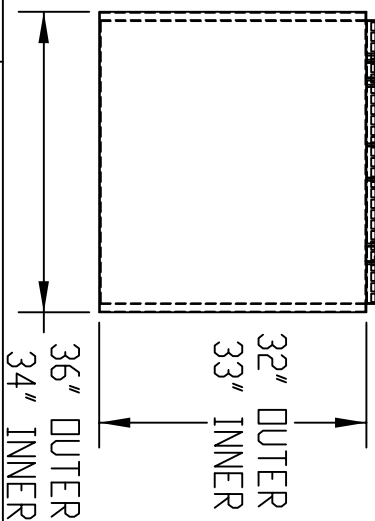
DETAIL B



TANK IS SHOWN WITH BAR GRATING COVERING TOP OF INNER TANK

FITTING "B" IS ON CENTER AND 8" FROM SIDE OF TANK

DETAILS A & B ARE SCALED UP FOR REFERENCE



LCW DW
500-10

DESCRIPTION:	ABOVE GROUND DOUBLE TANK, STEEL STORAGE 500 GALLONS	REF. TO:	
MATERIAL:	10 GA. INNER/12 GA. OUTER	DATE:	
CONSTRUCTION:	WELDED USING UL-142 STANDARDS	TITLE:	LCW DW
OPENINGS:	5-2" FNPT FLANGES 1-4" INNER EVENT FLANGE 1-4" OUTER EVENT FLANGE	SIZE:	A
FINISH:	SURFACE PREP, SPOC SP-3 DNE, SPRAY COAT OF RED PRIMER	LEGEND:	A - 2" FLANGE B - 4" INNER EVENT FLANGE C - 4" OUTER EVENT FLANGE
TURNER TANKS; GOLDSBORO, NC (919) 734 - 8328		SCALE:	1:32
		APPROVAL:	